



GMT MONTHLY MEMBERSHIP PROGRESS REPORT

Results as of: 7/31/2019

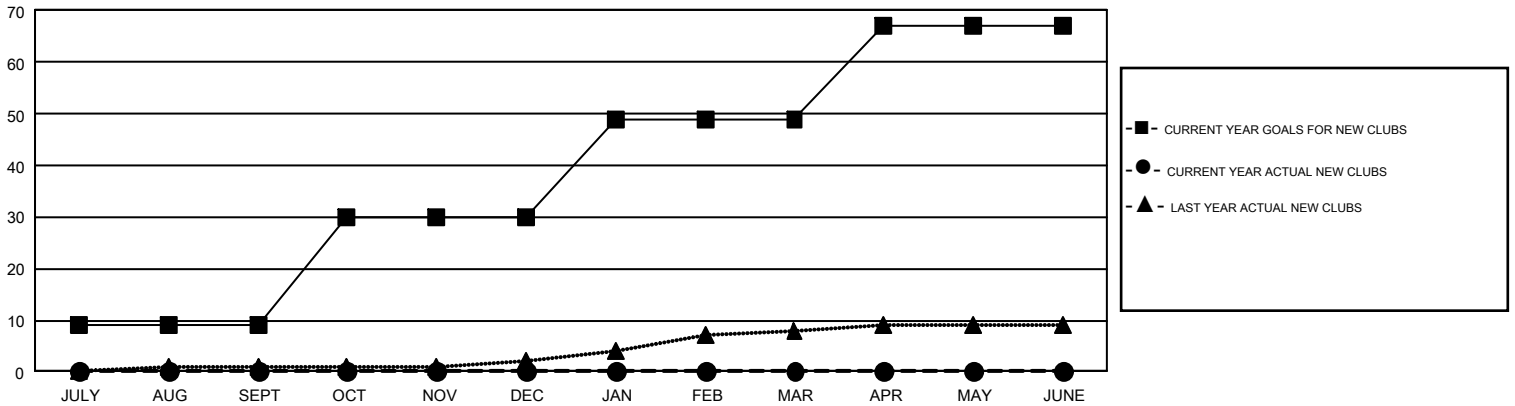
GAT Constitutional Area 5 - Japan

REPORT DOES NOT INCLUDE CLUBS IN UNDISTRICTED AREAS.

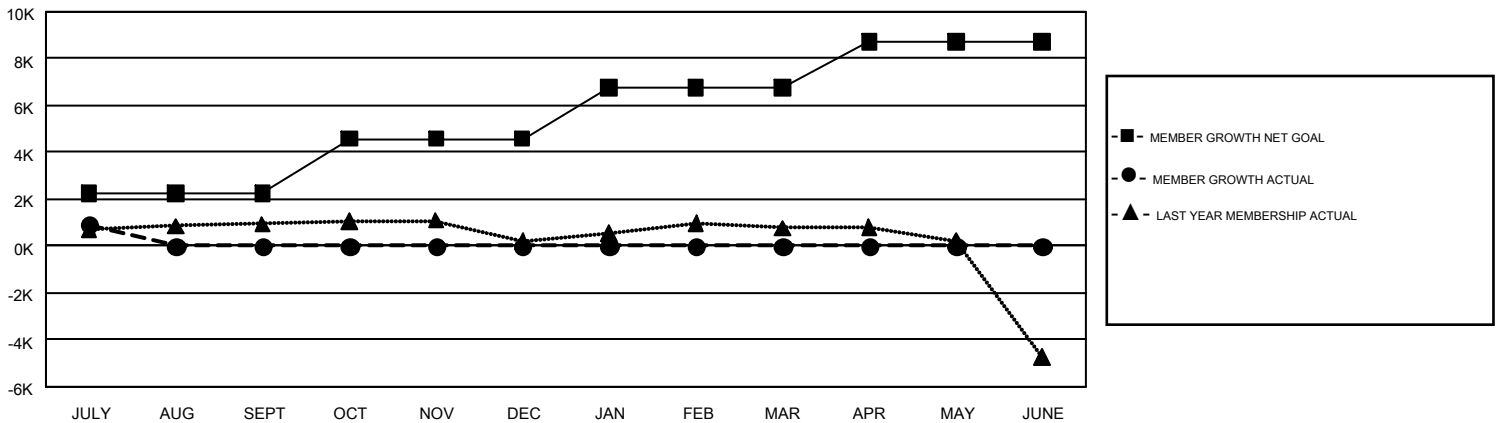
Clubs			
RESULTS FOR 2019-2020			
QUARTER	NEW CLUB GOAL	NEW CLUBS	DROPPED CLUBS
JULY/AUG/SEPT	9	0	4
OCT/NOV/DEC	21	0	0
JAN/FEB/MAR	19	0	0
APR/MAY/JUNE	18	0	0

Members			
RESULTS FOR 2019-2020			
QUARTER	MEMBER GROWTH NET GOAL	MEMBER GROWTH ACTUAL	DROPPED MEMBERS ACTUAL (including transfers)
JULY/AUG/SEPT	2230	2,032	977
OCT/NOV/DEC	2353	0	0
JAN/FEB/MAR	2172	0	0
APR/MAY/JUNE	1948	0	0

GOALS AND ACTUAL NEW CLUBS CUMULATIVE



GOALS AND ACTUAL MEMBERS CUMULATIVE



DROPPED CLUBS: 4	976 CLUBS OF 2,961 ADDED 1 OR MORE NEW MEMBERS	<u>GENDER DISTRIBUTION</u>	
DROPPED MEMBERS		MALE	84,591 (75.91%)
DECEASED	64	FEMALE	26,846 (24.09%)
CLUB CANCELLED	13	TOTAL FAMILY UNIT MEMBERS	
OTHER	900	41,951	
TOTAL	977	FAMILY MEMBERS PAYING HALF DUES	
		22,873	

[CLICK HERE FOR CUMULATIVE MEMBERSHIP DATA](#)